

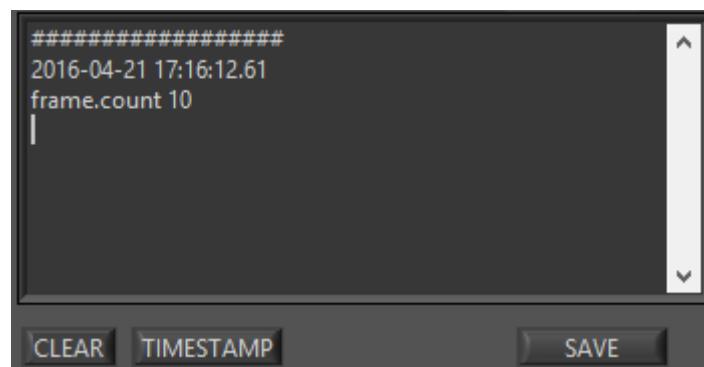
SciScan 1.1.5

Release Notes

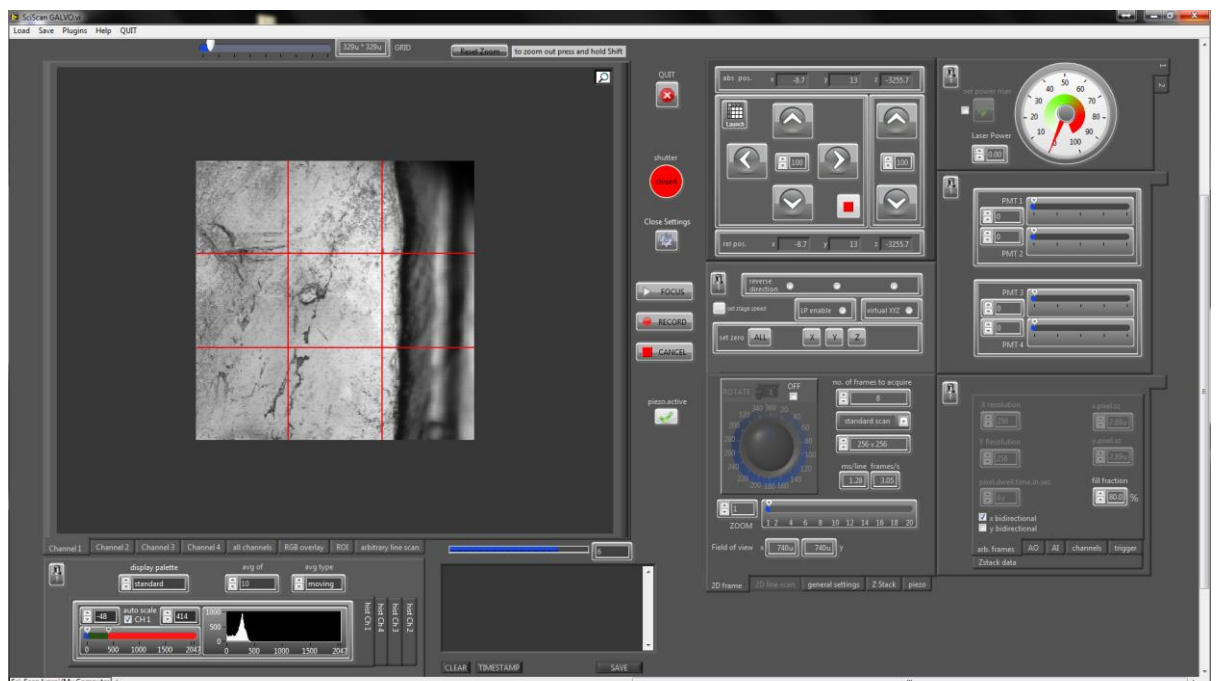


Changes

- Changes to protocol notes:** Added a "Save" button to manually save notes into the root folder. (n.b: Protocol notes are always saved automatically alongside each recording, but can now also be saved manually.) Time-stamp button function has been altered to include the current frame count along with the time-stamp.



- Grid Overlay Feature:** Added the option to overlay the displayed image with an adjustable size grid in both normal image display and in the position save module.



Bug fixes

- **Flystart stability:** Executing a scanning mirror Flystart – stopping and restarting the mirrors due to a change in scanning parameter – can lead to the software freezing if carried out too frequently or erroneously. Safeguards have now been implemented to reduce the frequency of flystarts and only execute when needed. It is still advised to stop focussing before adjusting parameters.
 - **Memory Use Optimization:** Under some circumstances, LabView memory usage was increasing during long imaging sessions. Memory utilization has now been optimised to keep resource requirements stable throughout long experiments.
 - **OME Metadata fixes:** In some cases, the OME-XML metadata was not written properly when a recording was cancelled, resulting in an empty metadata file. This has been resolved and appropriate metadata is now being written.
 - **LabView 2014 compatibility changes:** Under LabView 2014, SciScript and some motor functions behaved differently than under LabView 2012. These have been resolved.
 - **Various Minor Bugfixes**
-